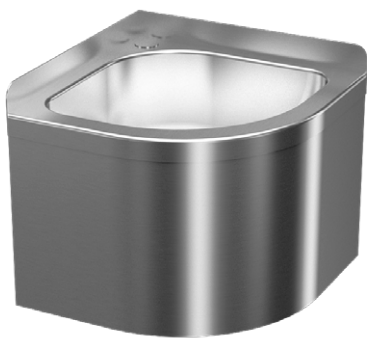


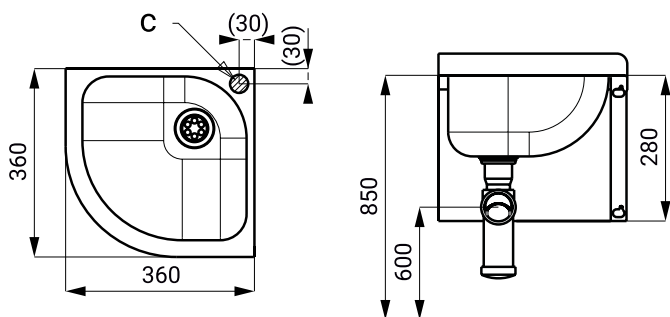
## Stainless Steel Washbasin SLUN 11



### Characteristics

- wall-mounted stainless steel corner washbasin
- without a tap hole (ø 35 mm hole can be made to order)
  - C - hole in the middle
- material AISI - 304
- brushed finish

### Dimensions



### Technical Specification

<b>Dimensions</b>	360 x 360 x 280 mm
<b>Weight</b>	3,2 kg
<b>Material thickness</b>	
▪ washbasin	1,2 mm
▪ side apron	2 mm

### Supply Specification

SLUN 11 - Supply No. 93110    stainless steel corner washbasin, siphon, mounting set