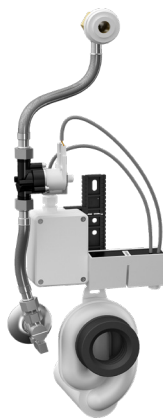
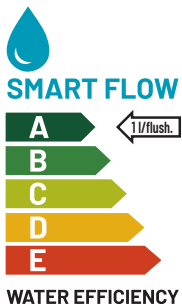


SLP 99S

SLP 99Z



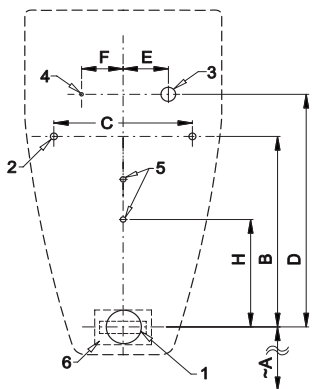
SLP 99B

Characteristics



- **DESIGNED FOR URINAL VERITY 2.0 7500 (Villeroy & Boch)**
- includes Bluetooth Control (Sanela Control app available for download)
- **THE URINAL DOES NOT NEED TO BE SENT FOR ASSEMBLY (RADAR UNIT IS SUPPLIED SEPARATELY)**
- economical flushing with one liter of water
- SLP 99S - pre-wall assembly (water inlet is provided by flexible hoses)
- SLP 99Z - 230 V AC, including power supply
- SLP 99B - 6 V, including case with 4 pcs of power supply batteries
- economical flushing with one liter of water
- the entire flushing system is located behind the urinal
- responds only to urinal use (evaluates changes, that occur inside the urinal during fluid flow)
- flushing duration is adjustable from 0.5 to 15.5 seconds
- parameter settings and communication with electronics via Sanela Control application (Bluetooth) or remote control SLD 04 without the need to dismantle the urinal (acoustic indication of setting)
- automatic flushing 6 hours after the last activation of the valve
- possibility to regulate water flow with an angle valve
- The product meets the water consumption parameters for class 1 according to the criteria of the EU Water Label program

Dimensions



- 1 - waste pipe Ø 50 mm
- 2 - 2 x holes for brackets
- 3 - water supply G 1/2"
- 4 - power supply 230 V AC (SLP 99Z) or 24 V DC (SLP 99S)
- 5 - 2 x hole for wall plug
- 6 - battery case (SLP 99B)

Technical Specification

Supply voltage

- SLP 99S 24 V DC
- SLP 99Z 230 V AC/50 Hz
- SLP 99B 6 V

Power input

- with power supply 24 V DC 8 W
- with power supply 6 V 3 W

Recommended flow pressure

- Rate of flow 0.1 - 0.6 MPa
- Water inlet 18 l/min (inf. data)
- Water outlet external thread G 1/2" outlet fitting with gasket

Illustrative photo:



Illustrative photo:



Dimensions (mm)	A	B	C	D	E	F	H
SLP 99 - VERITY 2.0 7500	405	275	180	305	55	70	210

* for a front edge urinal height of 650 mm above the floor

Supply Specification

- SLP 99S - **Supply No. 21992** radar flush including Bluetooth module on mounting rail, solenoid valve,
SLP 99Z - **Supply No. 21994** connecting hose, angle valve, outlet fitting with gasket, trap, power supply (SLP 99Z),
SLP 99B - **Supply No. 21996** 4 pcs AA alkaline batteries 1.5 V, 2700 mAh with case (SLP 99B)

Recommended accessories

- SLZ 01Y - **Supply No. 05012** power supply 24 V DC for operating of max. 5 pcs. of flushing units
SLZ 01Z - **Supply No. 05011** power supply 24 V DC for operating of max. 9 pcs. of flushing units
SLZ 04Y - **Supply No. 05042** power supply 24 V DC on DIN rail, for operating of max. 5 pcs. of flushing units
SLZ 04Z - **Supply No. 05041** power supply 24 V DC for DIN rail, for max. 9 flushers
SLZ 04X - **Supply No. 10049** power supply 24 V DC on DIN rail, for operating of max. 15 pcs. of flushing units
SLZ 06 - **Supply No. 05060** power supply 24 V DC for operating of max. 1 pc. of flushing unit
SLD 04 - **Supply No. 07040** remote control for an adjustment of parameters
SLA 11 - **Supply No. 06110** urinal fragrance screen - orange colour, mango scent
SLA 11A - **Supply No. 06111** urinal fragrance screen - red, kiwi grapefruit scent
SLA 11B - **Supply No. 06112** urinal fragrance screen - transparent, honeysuckle scent
SLA 11C - **Supply No. 06113** urinal fragrance screen - blue, cotton flower scent
SLR 09 - **Supply No. 08090** mounting frame for ceramic urinals with flusher in the urinal or for ceramic washbasins
SLA 36 - **Supply No. 06360** set of 4 pcs AA alkaline batteries, 1.5 V, 2700 mAh (for models with index B)
SANELA CONTROL APP paid Sanela Control app available for download on the App Store and Google Play



SLA 11



SLA 11A



SLA 11B



SLA 11C