

Automatic Washbasin Mixer SLU 36B



SANELA 
we make water cool®

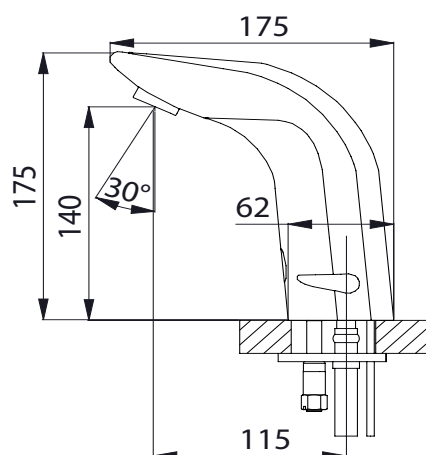


Characteristics



- includes Bluetooth control (Sanela Control app available for download)
- economical aerator, rate of flow 6 l/min
- hygienic flush
- possibility of water temperature adjustment by mixer and follow-cap plug by cover
- electromagnetic valve is in tap body
- is destined for cold and hot water, temperature is regulated by mixer
- water is flowing as long as hands are in the active range
- water stops flowing after removal of hands from the active range of sensor after adjustable time delay (can be set in range 0,25 – 7,75 s)
- function of automatic water stop after 5 minut of continuous flow
- monitoring of battery capacity
- START/STOP program
- parameter setting and communication with the electronics via the Sanela Control app (Bluetooth) or the SLD 03

Dimensions



Technical Specification

Dimensions	175 x 175 mm
Weight	3,36 kg
Operating voltage	6 V
Power input	2 W
Battery life	
▪ 4 pcs. AA alkaline batteries AA, 1,5 V, 2700 mAh	approx. 2 years (100 uses per day)
Active range	
▪ standard	0,13 - 0,19 m
▪ START/STOP program	0,05 - 0,15 m
Recommended flow pressure	0,1 - 0,6 MPa
Rate of flow	6 l/min. (inf. data)
Water inlet	male thread G 1/2"

Supply Specification

SLU 36B - Supply No. 03365 faucet with mixer, electronics including Bluetooth module and solenoid valve, coupling hoses, angle valve with filter and check valve (2 pcs.), cover for temperature mixer, 4 pcs. AA alkaline batteries 1,5 V, 2700 mAh with battery case

Recommended Accessories

SLD 03 - Supply No. 07030 remote control for an adjustment of parameters
SLA 36 - Supply No. 06360 set of 4 pcs. alkaline batteries AA, 1,5 V, 2700 mAh
SANELA CONTROL APP paid Sanela Control app available for download on the App Store and Google Play